

RATE CARD 2023

The  
Secret



Patio

VI. 3 JANUARY 2023

## ABOUT US

With small and intimate occasions in mind, this exclusive space will leave you in awe with its high ceilings, classy interior and a secret patio at the back – offering both outdoor greenery and cozy indoor comforts,

OUR ROOMS



01  
MAIN HALL

---

The main hall is perfect for a larger group.

Theatre Style : 40 Pax  
Seated Dining: 40 Pax



02  
VIP DINING ROOM

---

This VIP dining room is connected to the main hall and is suitable for a small intimate celebration.

Theatre style : 30 Pax  
Seated Dining : 25 Pax

SOCIAL DISTANCING REGULATIONS MAY APPLY

## OUR LOCATION

*10a Duxton Hill*

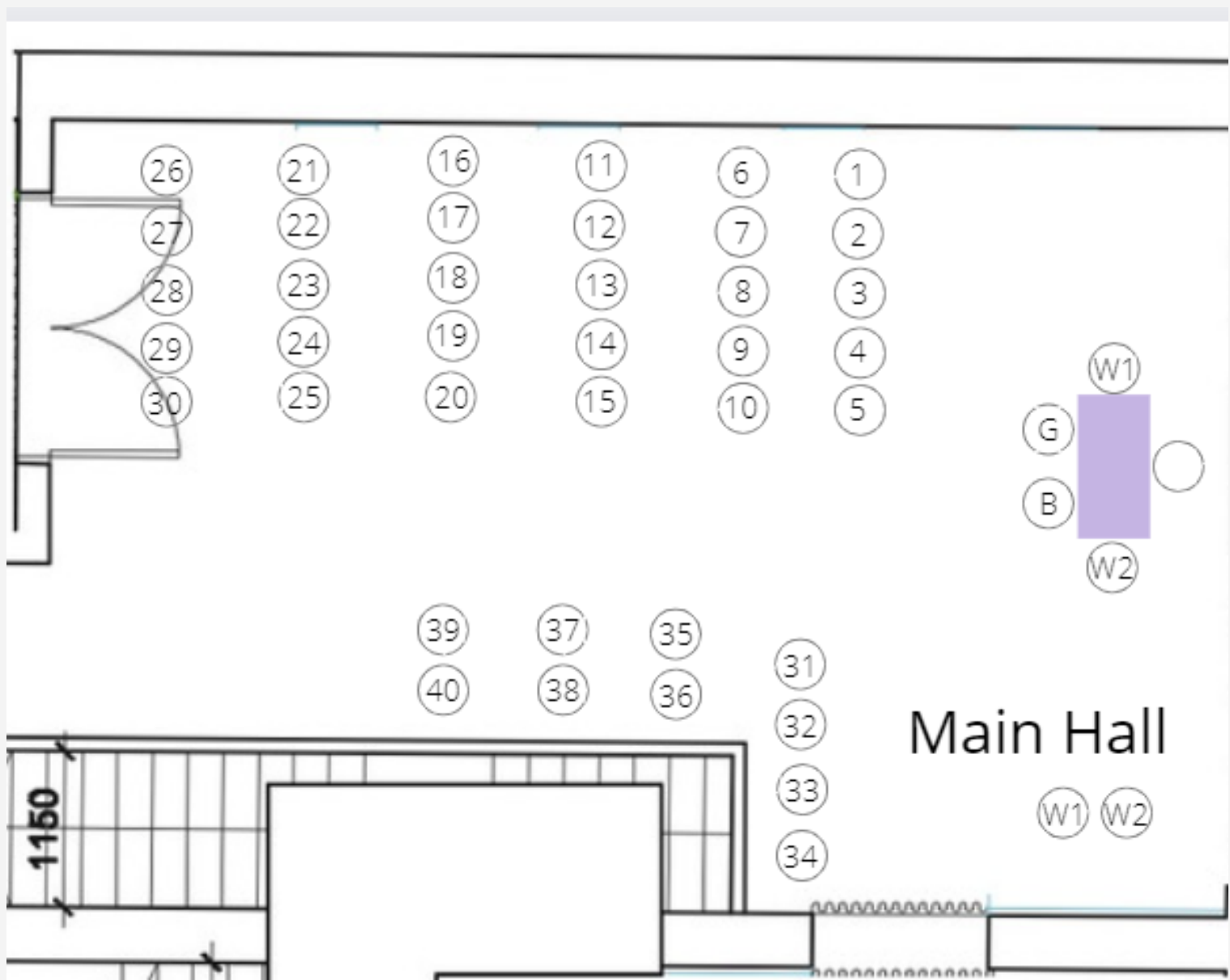


---

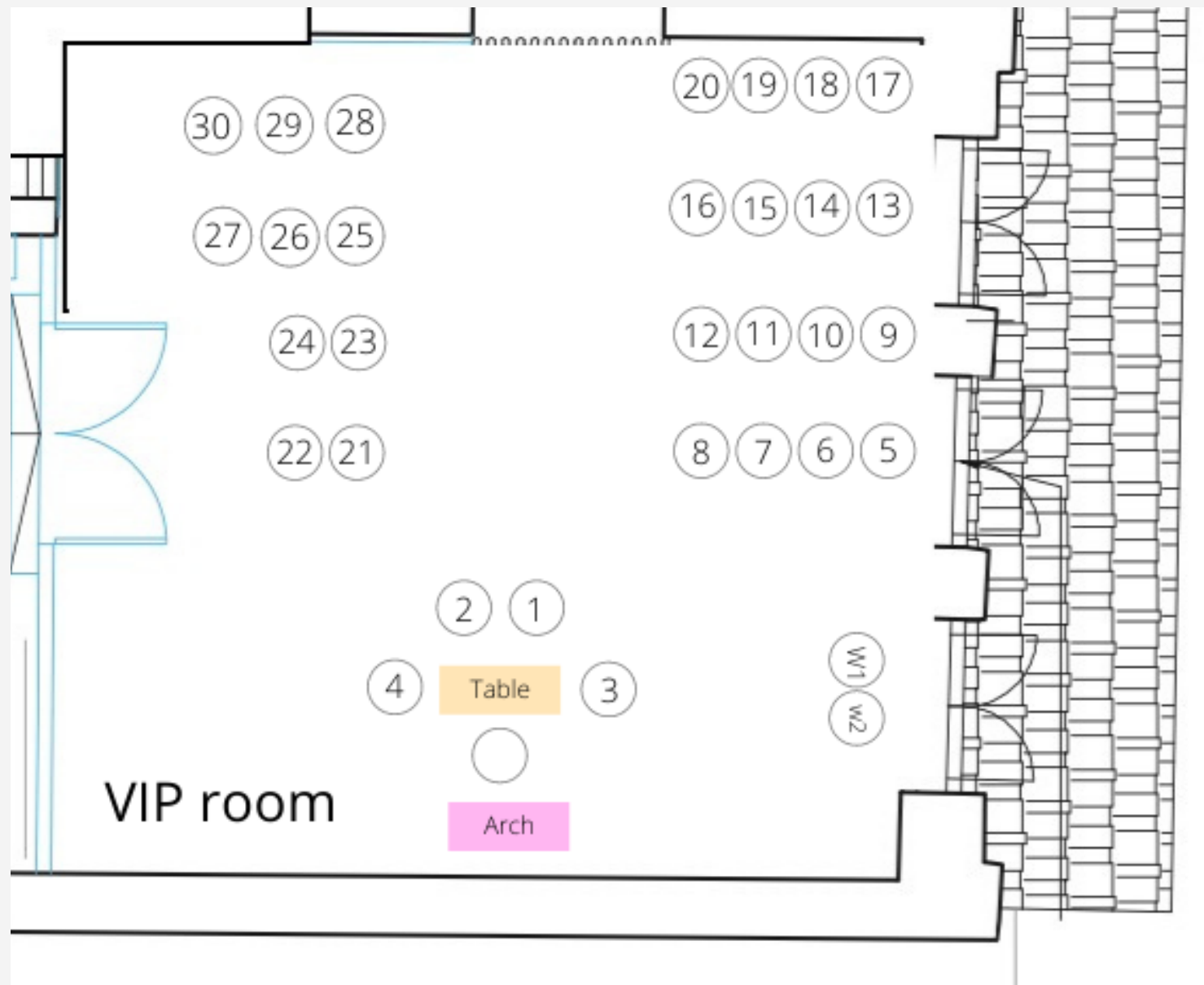
10A DUXTON HILL  
SINGAPORE  
089594

THE FLOOR PLAN

*Solemnisation in Main Hall*

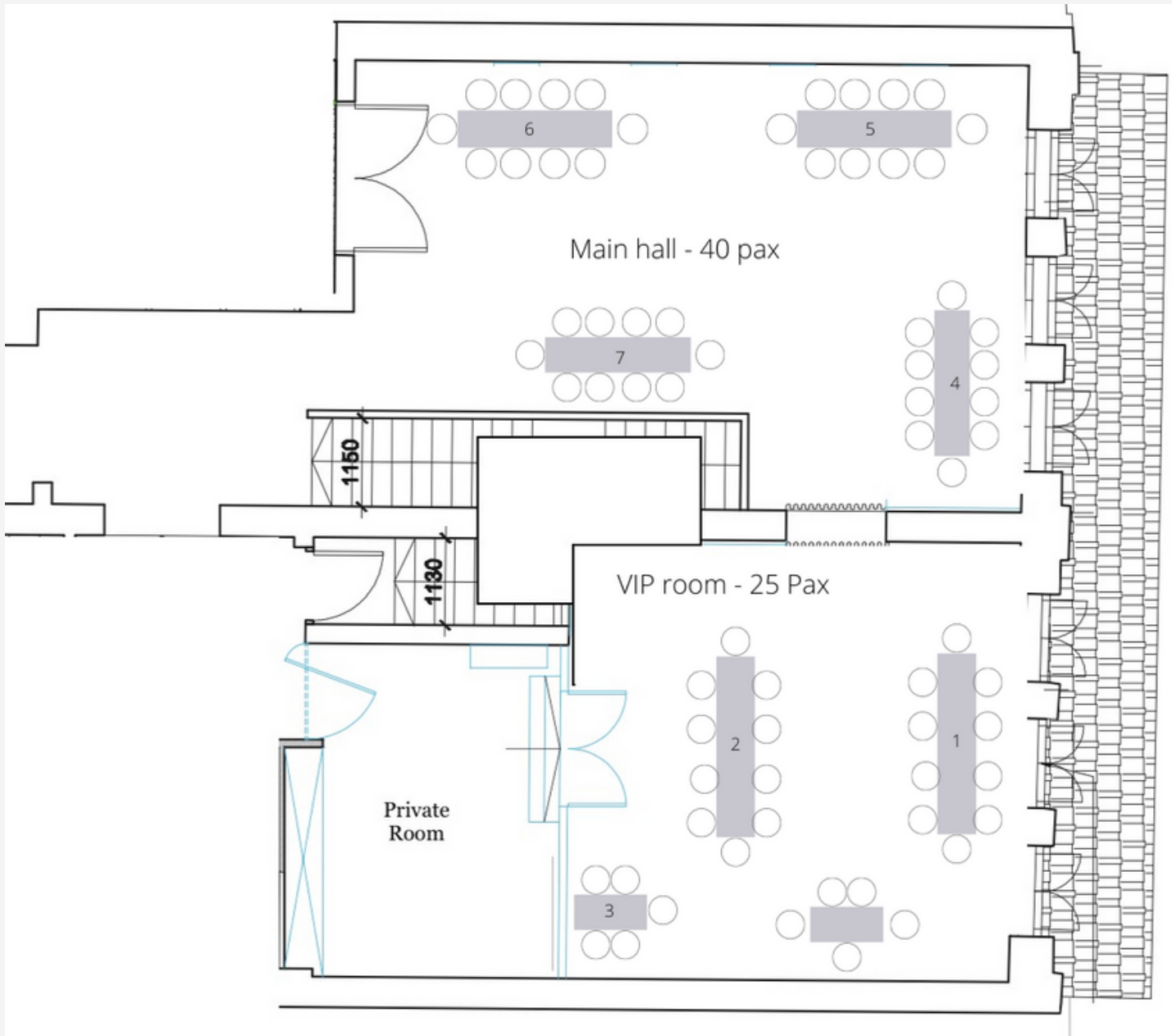


*Solemnisation in VIP room*

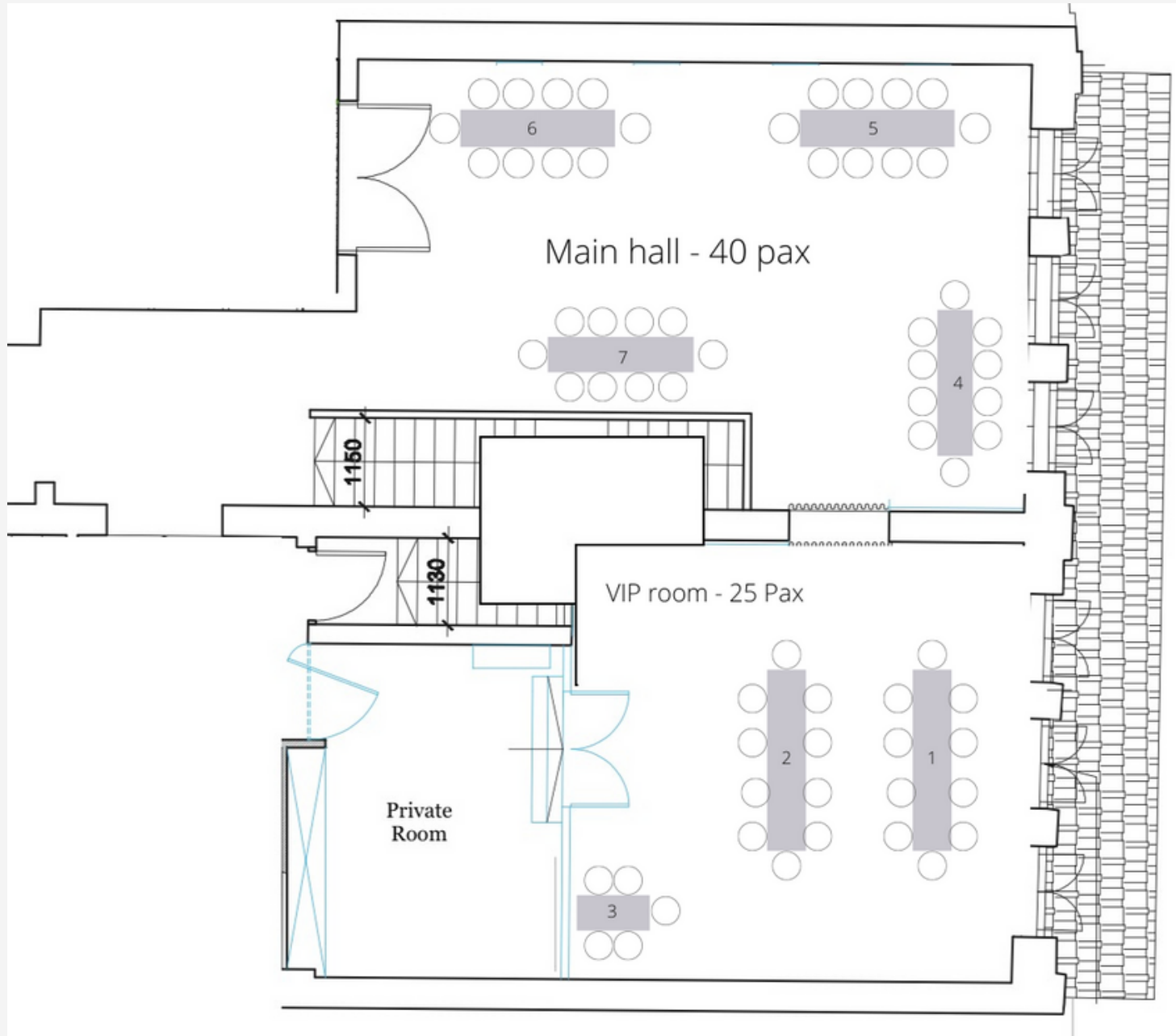


THE FLOOR PLAN

*Solemnisation + Dining*



*Reception/Dining only*





## OUR RATES

# WEDDINGS

## (WEEKEND)

---

Per Hour      \$1,500 Nett

4 Hours        \$3,800 Nett

8 Hours        \$7,000 Nett

*Minimum 2 hours booking*

For additional hours, Top up from an existing bundle at \$800/hr

*+ \$180 Cleaning & Disinfecting Fees*

*+ Refundable security deposit of \$500*

*+Wheelchair climber services \$500 (Optional)*

A woman in a white wedding dress stands with her back to the camera, looking into a doorway. The room has a large, ornate chandelier and a wall with a geometric pattern. The floor is made of light-colored wood.

OUR RATES

# WEDDINGS

## (WEEKDAY)

---

Per Hour      \$1,100 Nett

4 Hours        \$3,500 Nett

8 Hours        \$6,200 Nett

*Minimum 2 hours booking*

For additional hours, Top up from an existing bundle at \$750/hr

*+ \$180 Cleaning & Disinfecting Fees*

*+ Refundable security deposit of \$500*

*+ Wheelchair climber services \$500 (Optional)*



# FULL VENUE INCLUSIONS

## EXCLUSIVE PRIVACY

Exclusive use of all rooms (main hall, VIP room), as well as the outdoor secret patio.

## THEMED OR STANDARD WEDDING DECORATION

1 arch, reception table centerpiece, solemnisation centerpiece, bride and groom chairs, 2 VIP table centrepieces.

## AV EQUIPMENT

2 43" flat screen TV, Sonos Speaker, 2 standing speakers, 2 mics

## FURNITURE

120X60 dining tables, transparent crystal chairs.

## 1 STAFF

To assist and coordinate on-site

## PRIVATE ROOM

Use of private room suitable for tea ceremony and prepping before the event.



# THEMATIC DECORATIONS\*



## DARK FAIRYTALE

Rustic with warm undertones



## LOVE BLOSSOMS

Spring with pops of colour



## PURITY

Everything white with some soft lilac colours, has a wintry feel



## KINTSUGI

Chinese oriental

\*Thematic decoration only applies to 4 hours full venue booking bundle.  
\$300 top up applies for other bookings

## OUR RATES

# SPLIT ROOM\*

(ONLY WEEKDAYS & OFF-PEAK WEEKENDS)

*\*Split rooms include standard venue wedding decoration*

Main Hall Per Hour      \$700 Nett

VIP room Per Hour      \$500 Nett

Minimum 2 hours booking  
Off-peak weekend timings:  
9am-11am | 3pm-5pm

- + \$180 Cleaning & Disinfecting Fees
- + Refundable security deposit of \$500
- + \$300 for themed decoration (Optional)
- + Wheelchair climber services \$500 (Optional)



# SPLIT ROOM INCLUSIONS

## STANDARD SOLEMNISATION DECORATION

1 arch, reception table centerpiece, solemnisation centerpiece.  
bride and groom chairs.

## AV EQUIPMENT

1 43" flat screen TV, Sonos Speaker, 1 standing speaker, 1 mic

## FURNITURE

120X60 dining tables, transparent crystal chairs.

## 1 STAFF

To assist and coordinate on-site

## PRIVATE ROOM

Use of private room suitable for tea ceremony and prepping  
before the event.



# STANDARD DECORATION

APPLICABLE FOR WEDDINGS IN FEBURARY 2023- MID JULY 2023



STANDARD DECORATIONS WILL CHANGE EVERY 6 MONTHS

# FREQUENTLY ASKED QUESTIONS

WHAT IS YOUR MAXIMUM CAPACITY?

Our venue's maximum capacity is 60 pax for a sit-down meal (fine-dining style), 70 pax for a buffet arrangement, and 80 pax for a standing cocktail reception or theater seating with no dining tables.

WHAT IS THE SPLIT ROOM OPTION?

The split room refers to the 2 areas that we have at our venue - the VIP room and the main hall., connected by a double door. You may choose to book any room individually if you don't plan to book the entire venue. However, do note that it is only applicable on weekdays and off-peak weekends from 9-11am or 3-5pm.

DO YOU ALLOW PETS ?

We're totally ok with pets!  
However, we will require them to be kept in a pram/stroller at all times to keep our venue respectful to our Muslim guests.

IS YOUR VENUE WHEELCHAIR ACCESSIBLE?

Unfortunately not. We're a shophouse unit in a conservatory area and lifts are not allowed to be built. However, we work with a third party that provides the wheelchair climber services at additional charge with a trained operator who will be on standby for the full duration.